

## Quick Start Guide

*This guide describes a quick and easy way to install the product.*

**National Language Version:** To obtain the Quick Start Guide in other languages, print the language-specific PDF from the installation media.

### Product overview

Tivoli® Netcool/Impact is a set of runnable server components that work together to provide event management and integration functions for the Netcool® suite of products.

#### 1 Step 1: Access the software and documentation



You can use the two product DVDs to install Tivoli Netcool/Impact 6.1 or you can download it from the IBM® Passport Advantage® website at <http://www.ibm.com/software/howtobuy/passportadvantage/>.

For updates about obtaining fix packs see the Tivoli Netcool/Impact product support site at <http://www-306.ibm.com/software/sysmgmt/products/support/IBMTivoliNetcoolImpact.html>

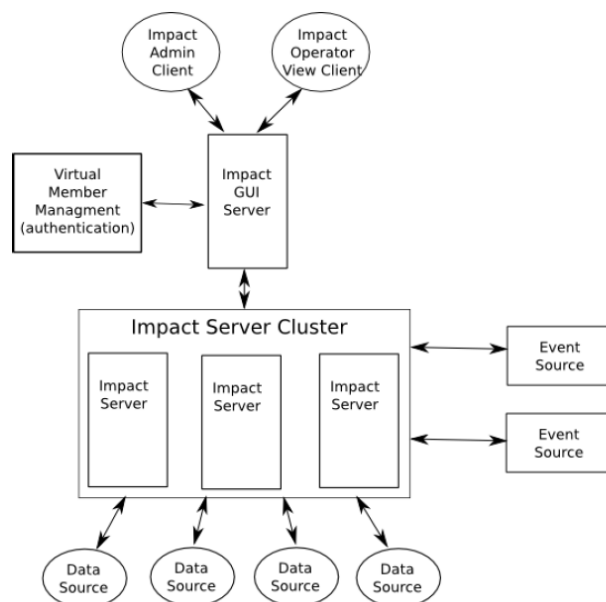
#### 2 Step 2: Evaluate the hardware and system configuration



For more information about system and hardware requirements, see Prerequisites for Tivoli Netcool Impact 6.1.

#### 3 Step 3: Review the installation architecture

The following image displays the basic architecture for Netcool/Impact 6.1:



## 4 Step 4: Installing the product on a server



Use the Tivoli Netcool/Impact installer application to install Tivoli Netcool/Impact on either a Windows or a UNIX system:

- On Windows systems, start the installer under a user account with administrator privileges.
- On UNIX systems, use a non-root user account that has read and write privileges on the installation directory to start the installer. You cannot use the *root* (superuser) account to start the Tivoli Netcool/Impact installer.

The Tivoli Netcool/Impact installer automatically installs all the software prerequisites for Tivoli Netcool/Impact, including the embedded version of IBM WebSphere® Application Server and the default Java™ application server that is used by Tivoli Netcool/Impact.

Before you install Tivoli Netcool/Impact, decide which of the following installation types is most suitable for your environment:

### Simple installation

Use the simple installation when you want to install Tivoli Netcool/Impact software on one computer and use the default ports and values. Simple installation is not recommended for production systems.

### Advanced installation

Use the advanced installation to install Tivoli Netcool/Impact onto a production system. You can install Tivoli Netcool/Impact into a production environment using one computer for both the Impact Server and the GUI Server. You can also install the Impact Server and the GUI Server on separate computers. This installation is especially useful for clustered servers.

To install all Tivoli Netcool/Impact components on one computer, complete the following steps:

1. Run the Tivoli Netcool/Impact installer in the advanced installation mode. Keep the suggested default settings.
2. Note all the settings that the installer application displays. Store them for reference.

To install the Impact Server and the GUI Server separately, complete the installation in the following order:

1. Use the Tivoli Netcool/Impact installer to install the GUI Server on a computer. In advanced installation mode, select installation of the GUI Server only. Use the default settings and make a note of these settings.
2. Start the GUI Server that you installed.
3. Use the Tivoli Netcool/Impact installer to install the Impact Server on one or several computers as necessary. In advanced installation mode, select installation of the Impact Server only. At the GUI Server installer prompt, enter the name or IP address of the computer where the GUI Server was installed. The installer automatically confirms the presence of the server.

## More information



For more information about configuring Tivoli Netcool/Impact, see the IBM Tivoli Netcool/Impact Administration Guide. The Tivoli Netcool/Impact documentation can be accessed from the online information center at <http://publib.boulder.ibm.com/infocenter/tivihelp/v8r1/topic/com.ibm.tivoli.tabsmimpact.doc/welcome.htm>

For additional technical information, including fix pack information, see the Tivoli Netcool/Impact product support site at <http://www-01.ibm.com/software/sysmgmt/products/support/IBMTivoliNetcoolImpact.html>.

